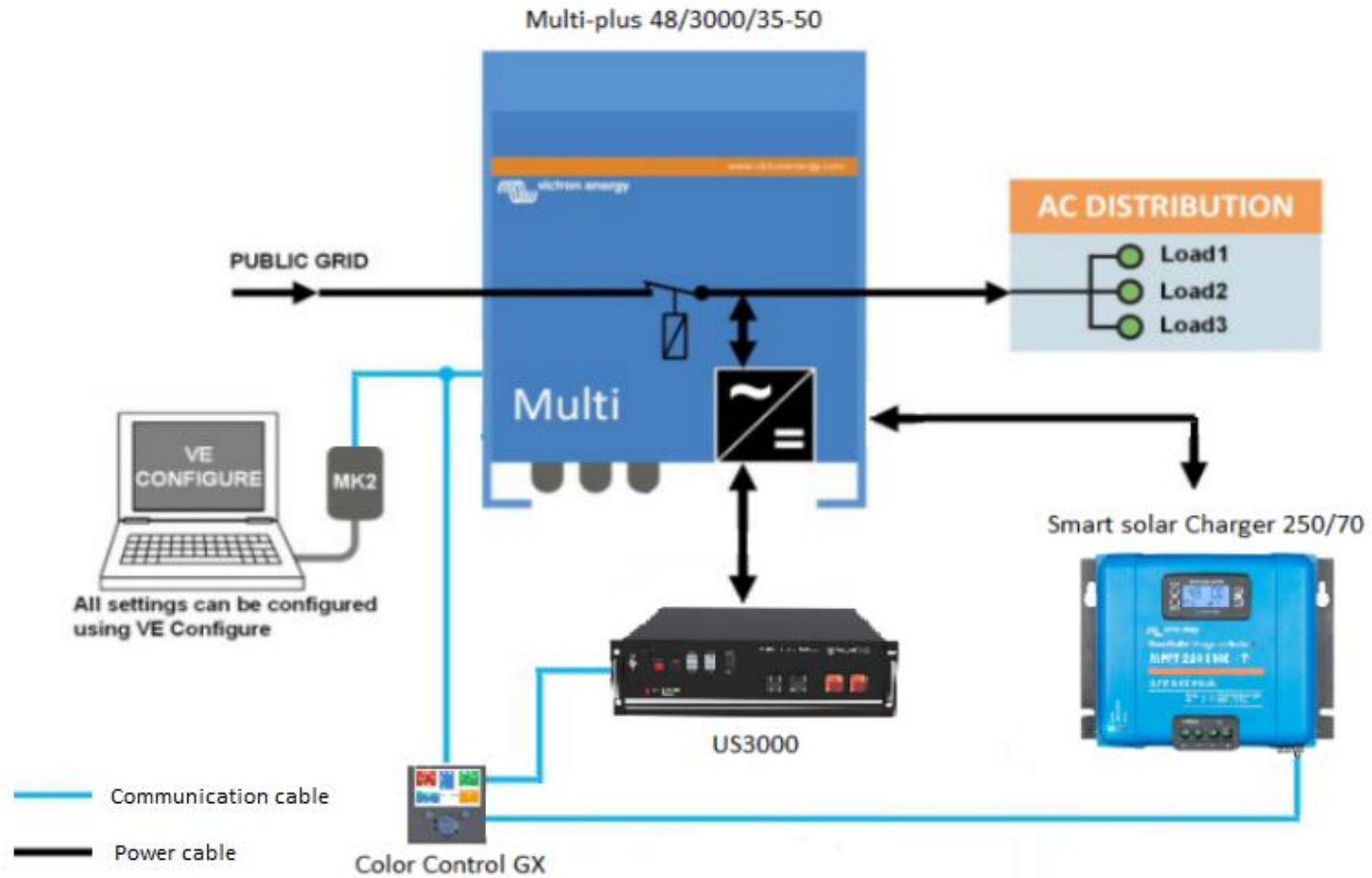
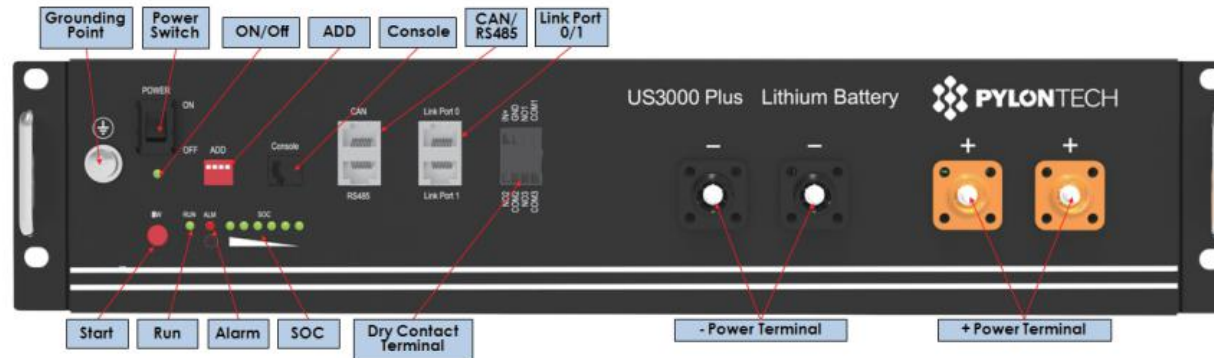


# 1 . Operating Sample



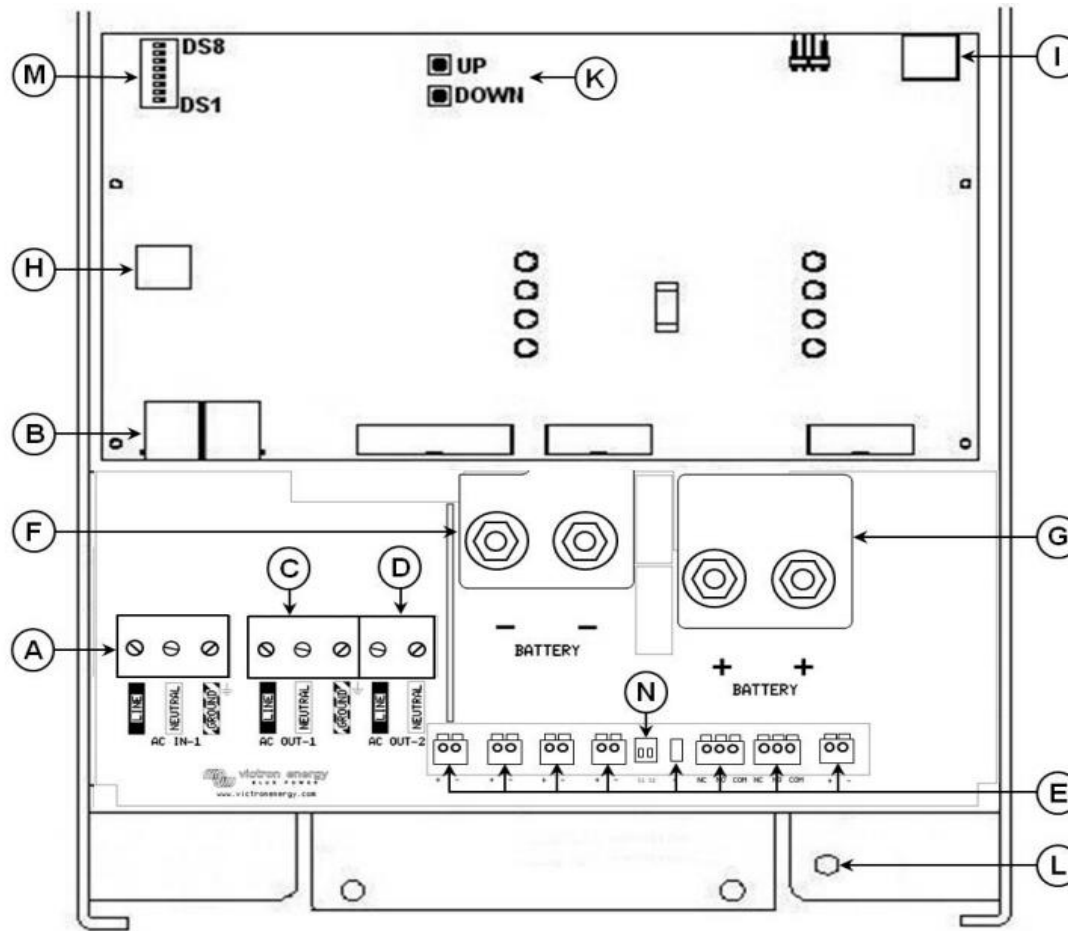
## 2 . US3000 Plus Product Front Interface



## 3. MPPT Product Front Interface



#### 4 . The battery and power supply connection on the main part of the inverter



A : AC input: Left to right: L (phase), N (neutral), PE (earth/ground).

B : 2x RJ45 connector for remote control.(CCGX)

C :Load connection. AC out1. Left to right: L (phase), N (neutral), PE (earth/ground).

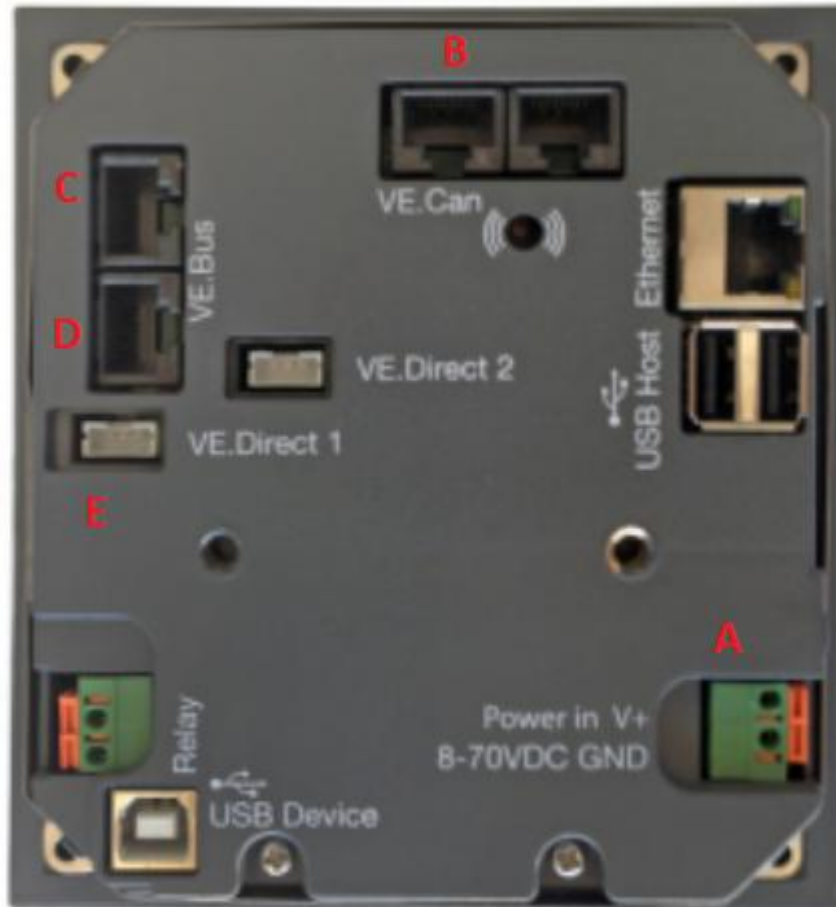
D :Load connection. AC out2.Left to right: PE,L,N.

E : Left to right  
 Temperature sensor  
 Aux input 1  
 Aux input 2  
 Starter battery plus +  
 Programmable relay contacts K1  
 Programmable relay contacts K2  
 Voltage sense

F :Double M8 battery minus connection.

G :Double M8 battery positive connection.

## 5 . The Connection of Color Control GX



**A :** To battery, Red ( + ), Black ( - ).

**B :** To battery RJ45 port

**C :** To MK2 RJ45 port

**D :** To Inverter RJ45 port

**E :** To MMPT VE Direct port

## 6 . The Connection of MMPT



**A** : To Battery, Red ( + ), Black ( - ).

**B** : To PV, Red ( + ), Black ( - ).

**C** : To CCGX VE.Direct port

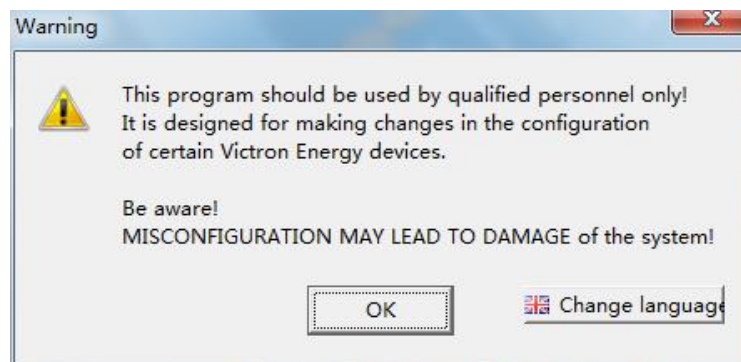


## 7 . Parameter settings in VE Config

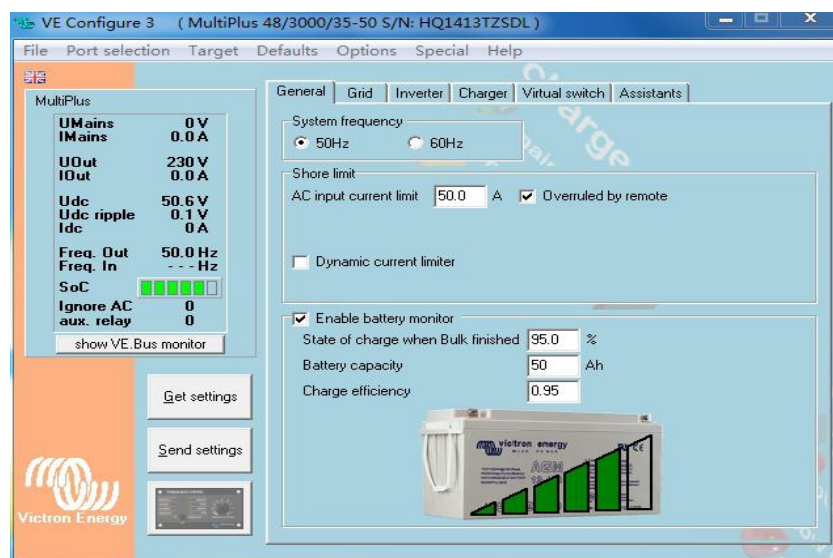
### 7.1 Use MK2 to connect inverter and PC



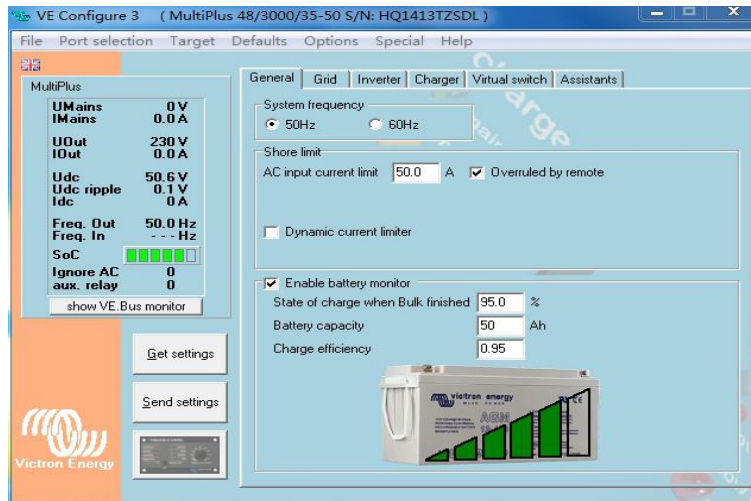
### 7.2 Open VE Config and click “OK” button



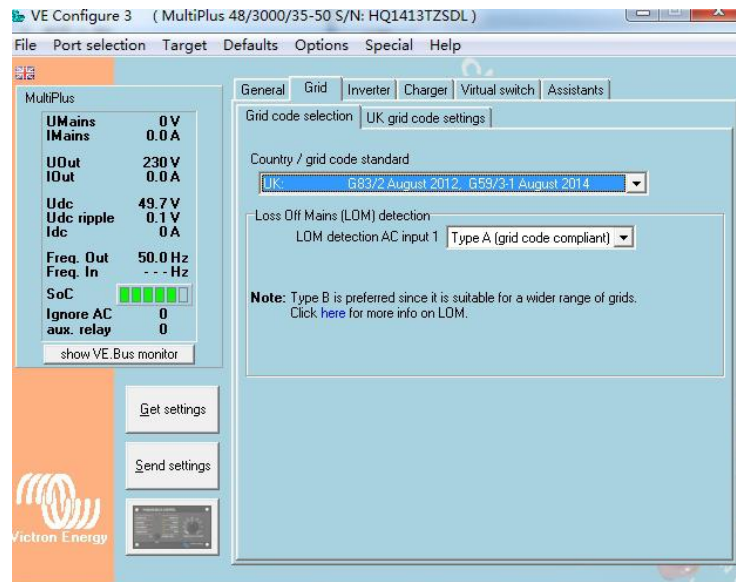
### 7.3 Select the option Com Port in “Port selection”, select the serial Port of the device connection in it, and the software will start reading the bar .



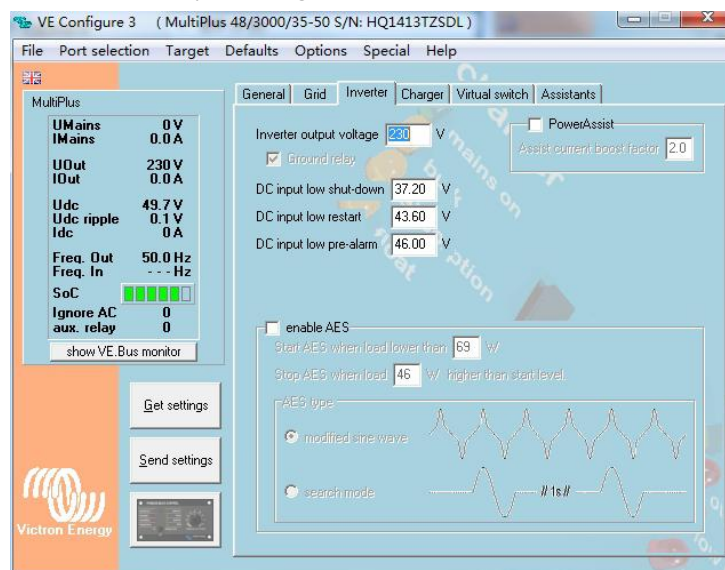
### 7.4 After reading the bar, set the “General” parameters as follows



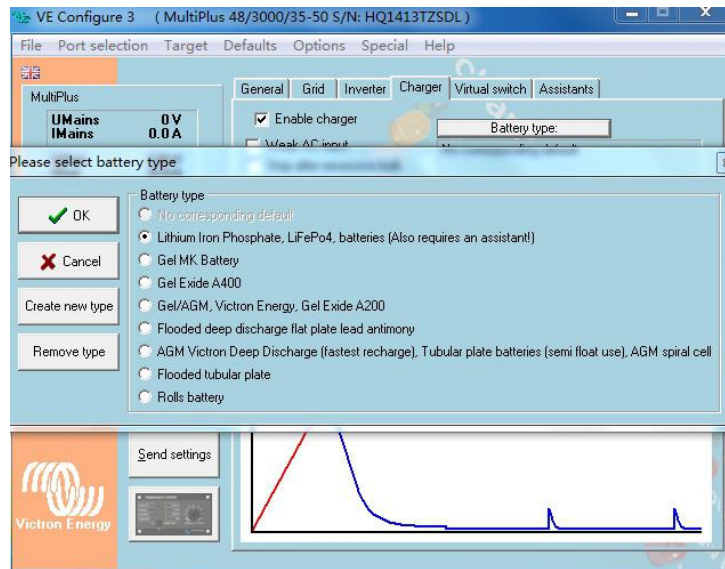
### 7.5 Click “Grid” to set National standards



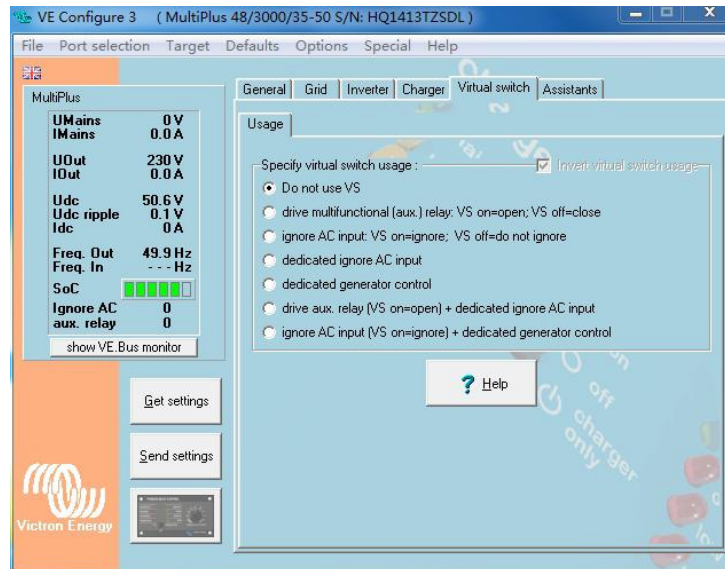
### 7.6 Click “Inverter” to set output voltage level



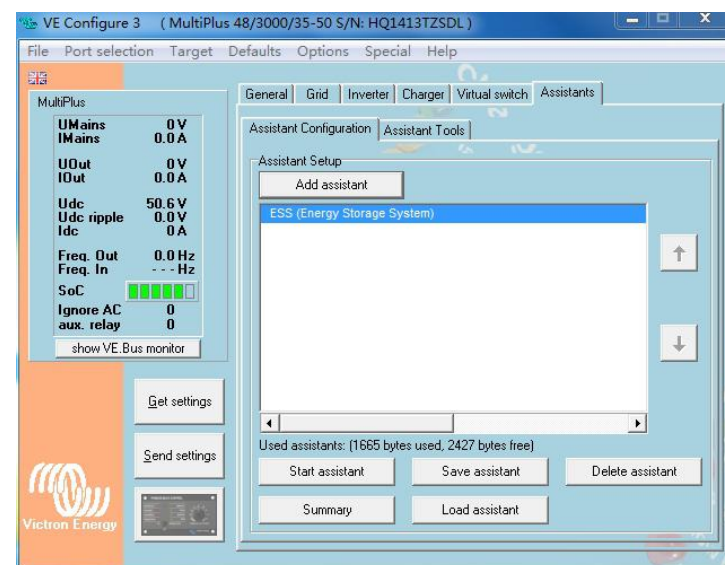
### 7.7 Click “Charge” to set Battery type



### 7.8 “Virtual switch” setting

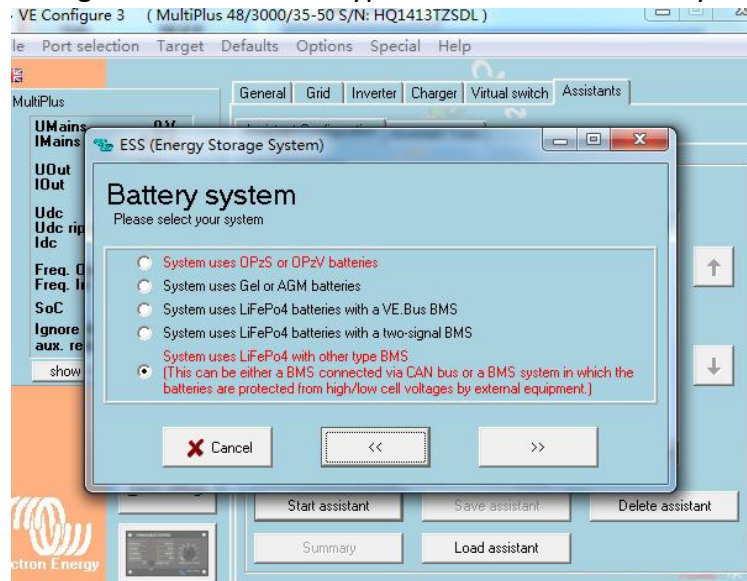


### 7.9 Click “Assistant” button, then load ESS, Click the “start assistant”





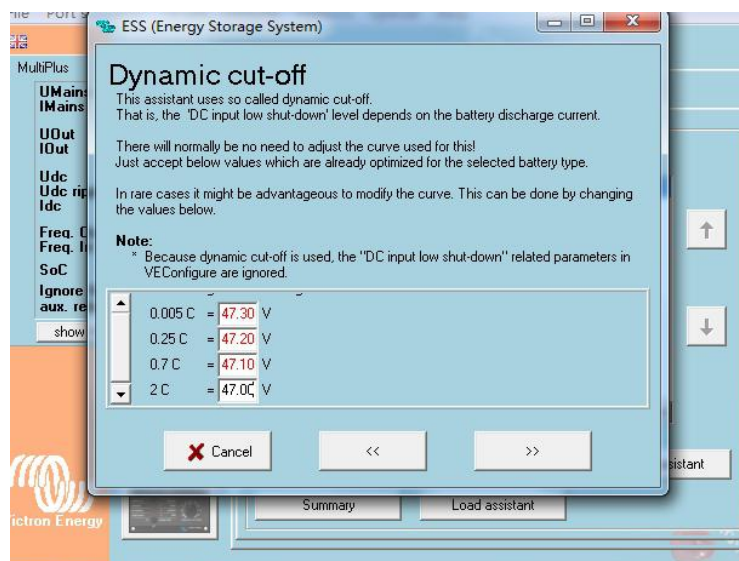
### 7.10 The ESS setting and communicate type with the PYLON battery is as follows



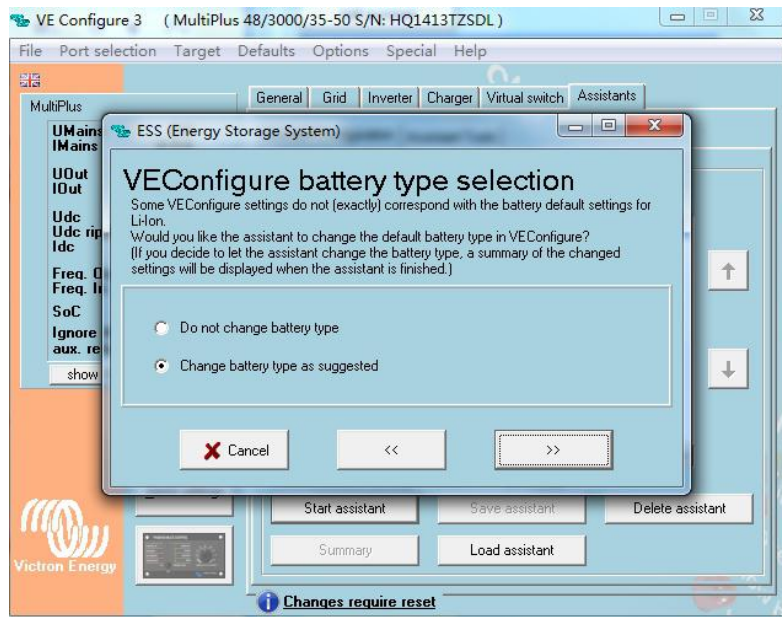
### 7.11 Set the total capacity number (AH) of external batteries



### 7.12 Set Dynamic cut-off voltage



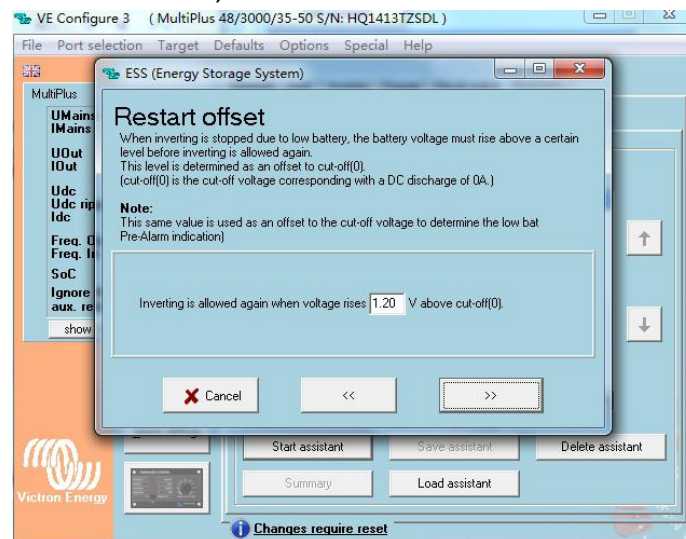
### 7.13 Choose battery type



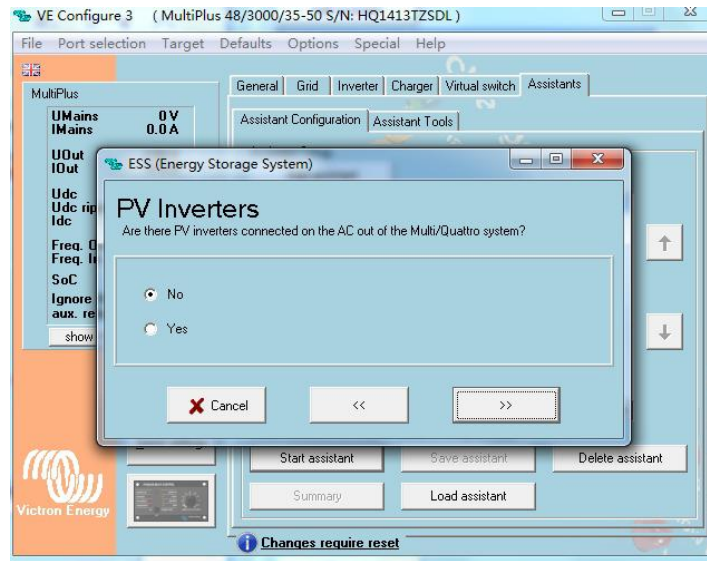
### 7.14 Set Sustain voltage by default to 50



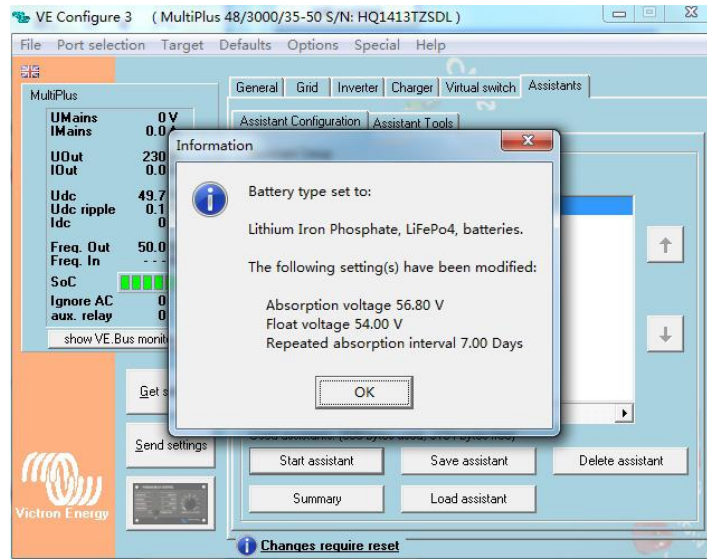
### 7.15 Restart offset default is 1.2, can be modified



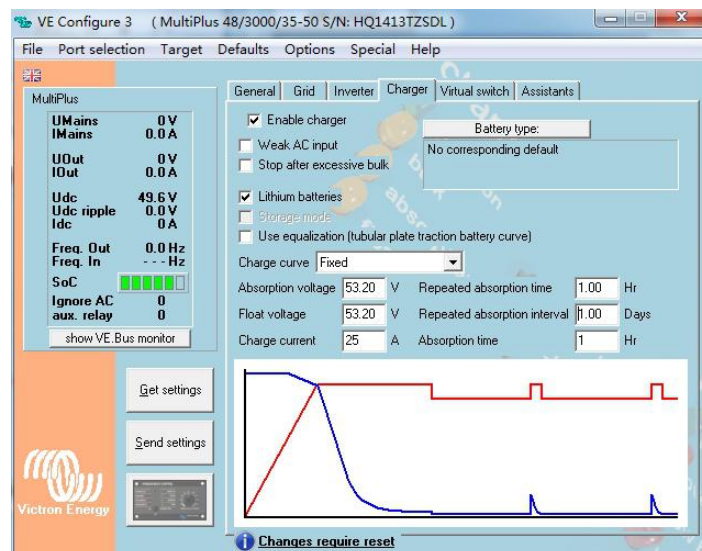
### 7.16 Choose PV inverters according to the actual situation



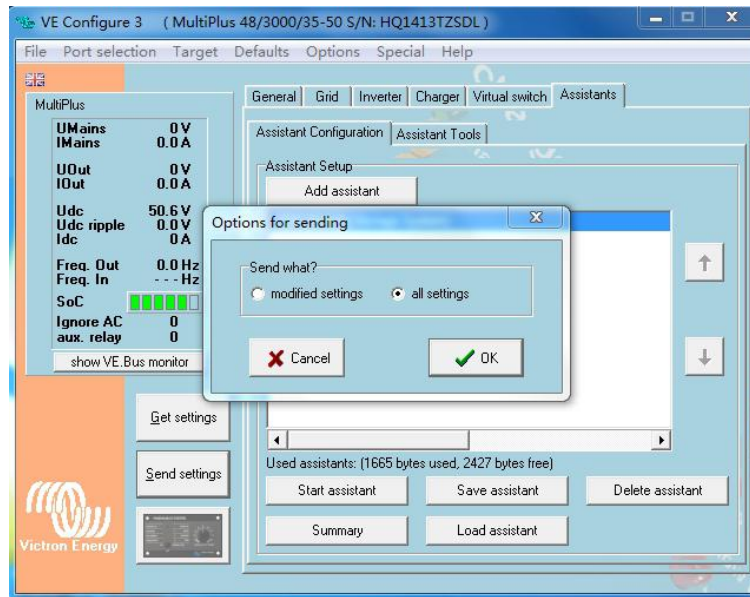
### 7.17 Complete setting , click "OK" button



### 7.18 Back to "Charge" page to set battery charge voltage

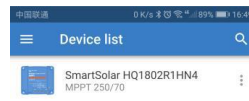


**7.19** Send the set parameters to CCGX. Restart CCGX after completion.



## 8 . Parameter settings in MPPT

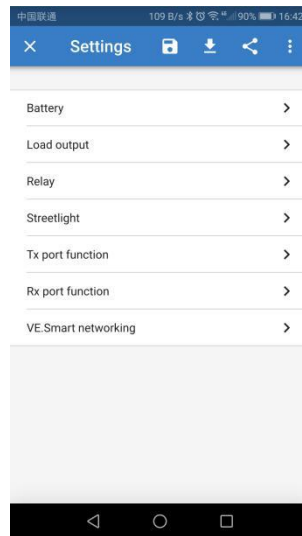
**8.1** Open “Victron Connect” APP ,the device will be displayed in the APP after matching the bluetooth



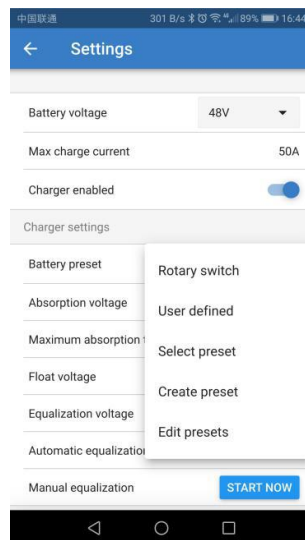
**8.2** Click the device picture box to enter the status home page



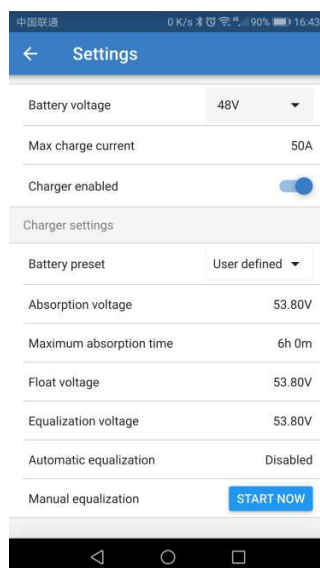
**8.3** Click the setting icon in the upper right corner to enter the parameter setting page. The setting options are as follows



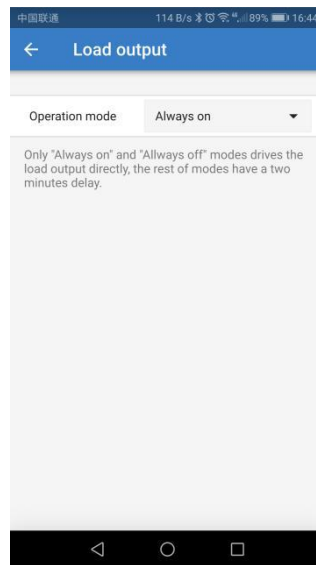
**8.4** Click the “Battery”. The parameters are set as follows



**8.5** Click the “Users defined” button to modify the preset parameters

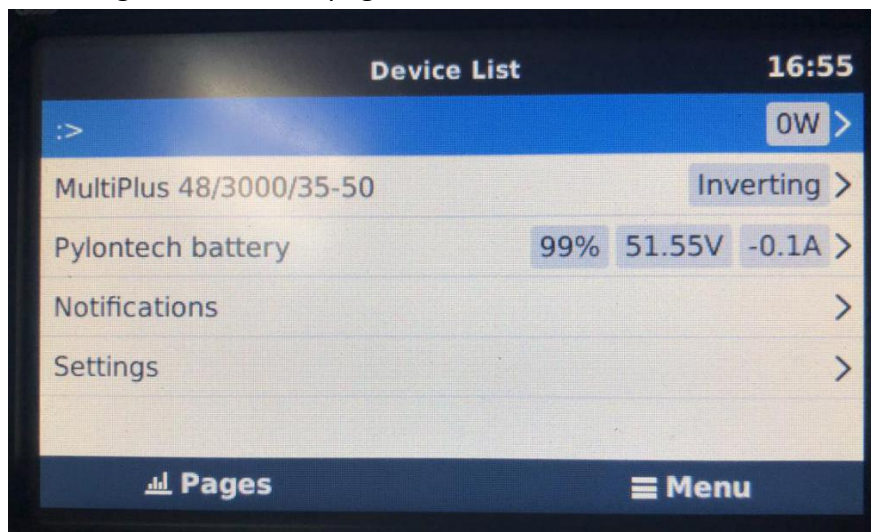


**8.6** Back to the Settings page and click “load output” to modify the operation mode

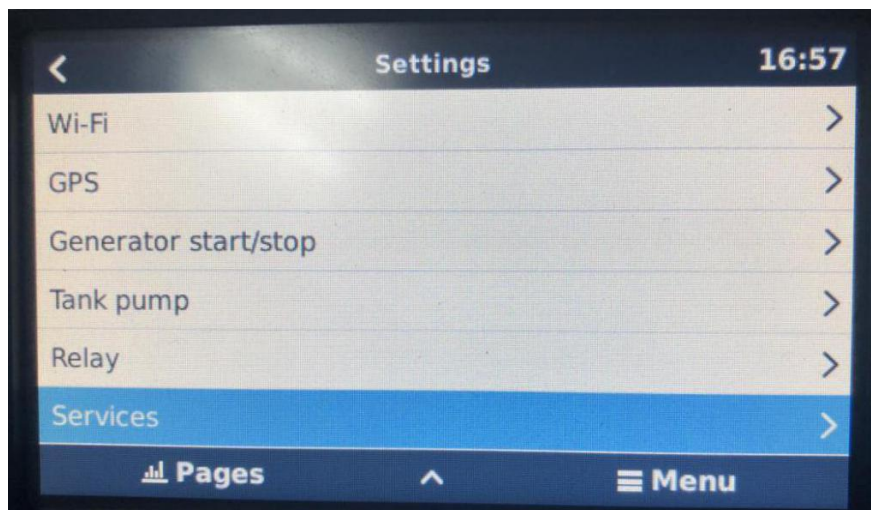


**9 . Parameter settings in CCGX**

**9.1** Select “Settings” on the main page



**9.2** Select the “service” in Settings



### 9.3 Service settings as follows

