



WECCO DUAL VOLTAGE 5K3-XP



DUAL VOLTAGE BATTERY LV/HV

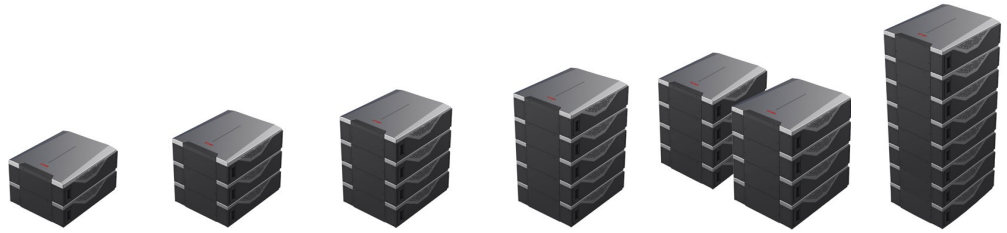


SINGLE MODULE LV/HV



Basic Parameters	5K3 LV/HV FOR INDOOR USE ONLY
Module Capacity (kWh)*	5,3
Single Module Nominal Voltage (Vdc)	52
Application	Dual Voltage LV/HV
Modules Expandibility	<p>HV Mode: Max 16 Modules in Series with Single HV Box = One HV Cluster Max 10 HV Clusters composed by maximum 16 modules in serial connection each</p> <p>LV Mode: Max 15 Modules in Parallel without WeHub = One LV Cluster Max 7 LV Clusters composed by maximum 15 modules in parallel connection</p>
Cluster Net Capacity (with HV HUB)	Max 144 Modules per HV System
Voltage Range (Vdc)	47,5-58,4 BMS dynamically adjust the operating values
Cell Net Capacity (Ah)	105
Usable Capacity (Ah)	100
Dimension (mm)	580 x 463 x 155
Weight (kg)	57,3
Charge / Discharge Current (A)	100 (150 30sec)
Peak Discharge Current	200 Peak 5 s
Depth of Discharge	Up to 100%
Communication Port	RS485, CAN, 232, Wi-Fi
Modules in serial Connection	Up to 16 pcs (934Vdc Max String Voltage)
Discharge Temperature (°C)**	-20 ~ +60
Charge Temperature (°C)**	-10 ~ +55
Shelf Temperature (°C)**	-10 ~ +45
Humidity (%)	5 ~ 95
Altitude (m)	< 3000
Design life	15 Years (25°c)
Expected Life Cycles @ STC 80% DoD	> 8000 (25°c)
Standards	IEC62619 UL1973 CE IEC 61000 UN38.3
Features	Pre-Charge+Fuse LV+ Fuse HV+ Auto Contactor + Dual BMS+ Multi BMS FW management
	Applicable for Low Voltage and High Voltage systems, Four protection levels for HV Box, Real time balancing, Adaptive charge/discharge CAN logic, Three step adaptive charging logic, 2xDI/DO programmable ports, Mobile APP for monitoring, control, debugging, firmware update and historical information.
Notes	<p>*- Module net usable energy is managed by the BMS control logic to 100Ah **-See Warranty Terms and the Standard Test Conditions "STC" and the operative temperature</p> <p>All data subject to the change without prior notice, no part of this document can be copied or reproduced without written permission of WeCo 5K3-XP Is designed to operate indoor or in Outdoor Cabinet approved by WeCo WeCo 5K3, Datasheet referred to the modules in production from April 2022</p>

LOW VOLTAGE STACKABLE



Battery Module	2	3	4	5	4+4	Up to 15
Battery System Capacity (kWh)*	10,4	15,6	20,8	26	41,6	Up to 79,5
Voltage Range (Vdc)	47,5 - 58,4					
Dimensions (mm)	580x463x330	580x463x495	580x463x660	580x463x825	(2x) 580x463x660	
Weight (Kg)	114,6	171,9	229,2	286,5	2x 229,2	
Depth of Discharge	Up to 100%					
Charge/Discharge (Recommended)	160	240	320	400	640	
Current (A) (Continuous)	210	300	390	480	780	
(Peak 30s)	300	380	470	560	940	
(Discharge Peak 5s)	400	600	800	1000	1600	
Communication	RS485, CAN, 232, Wifi					
Discharge Temperature (°C)	-20 ~ +60 **					
Charge Temperature (°C)	-10 ~ +55**					
Storage Temperature (°C)	-10 ~ +45**					
Humidity	5% ~ 95%					
Altitude (m)	< 3000					
Design life	10 Years (25°C)					
Expected Life Cycles @ STC**	> 8000 (25°C/80%DoD >75% residual capacity)					
Standards	IEC62619 UL1973 / CE / IEC 61000 UN38.3					

*- Module net usable energy is managed by the BMS control logic to 100Ah, when more than 1 module it si calculated as 5.2kWh Nominal capacity

** - See Warranty Terms and the Standard Test Conditions "STC" and the operative temperature

LOW VOLTAGE WALL MOUNTED



HIGH VOLTAGE STACKABLE



Battery Module	4	5	6	7	8	8+8
Battery System Capacity (kWh)	20,8	26	31,2	36,4	41,6	83,2
Recommended Voltage (V)	min 200 max 232	min 250 max 290	min 300 max 348	min 350 max 406	min 400 max 464	min 800 max 928
Dimensions (mm)	580x463x660	580x463x825	580x463x990	580x463x1155	580x463x1320	(2x) 580x463x1320
Weight (Kg)	229,2	286,5	343,8	401,1	458,4	2x 458,4
Depth of Discharge	100%					
Charge/Discharge (A)	100 / 100					
Communication	RS485, CAN, 232, Wifi					
Discharge Temperature (°C)	-20 ~ +60**					
Charge Temperature (°C)	-10 ~ +55					
Storage Temperature (°C)	-10 +40**					
Humidity	5% ~ 95% no condensation Indoor Application Only					
Altitude (m)	< 3000					
Design life	10 Years (25°C)					
Expected Life Cycles @ STC**	> 8000 (25°C/80%DoD >75% residual capacity)					
Standards	IEC62619/UL1973 / CE / UN38.3					

*- Module net usable energy is managed by the BMS control logic set to 100Ah
 **- See Warranty Terms and the Standard Test Conditions "STC" and the operative temperature
 ***- HV BIX is compulsory when the 5K3 XP is used in HV configuration

WeCo WiFi Monitoring and Bluetooth Set Up APP



CERTIFICATIONS

